



ATTIX⁵
BACKUP PROFESSIONAL

RELEASE NOTES

V4.4 RELEASE

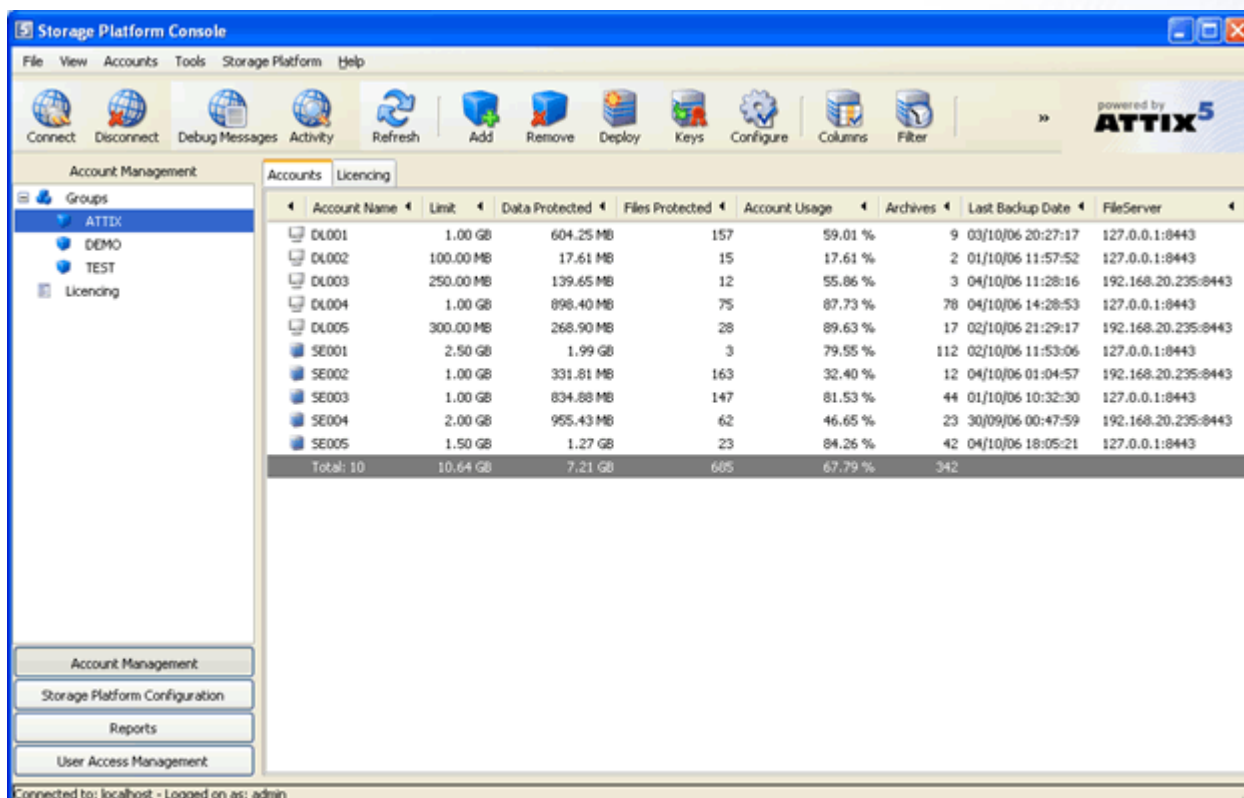
ATTIX⁵ BACKUP PROFESSIONAL

V4.4 RELEASE NOTES

STORAGE PLATFORM CONSOLE

The newly designed Storage Platform Console is available! The Console was completely redesigned due to the vast amount of changes in functionality. The following were key focus points during this project:

- Centralised Management and Access, including Server Edition Backup Accounts
- Activity/Progress Monitoring
- Enhanced Reporting
- Access Management and audit trail
- Ease of use



The new Storage Platform Console can be divided into the following sections:

Account Management

Backup Group and Backup Accounts are administered in this section as well as Licence management. Additional information is now available in the Backup Group Accounts tab and includes the Backup Client version and Operating System. This section also provides the ability to remotely connect to any Server Edition Backup Client in your organisation to modify the file selections, change advanced configuration settings, and to initiate backups or restores.

Faster browsing through previous backups has also been enhanced as the Storage Platform Console communicates directly with the FileServer to retrieve the information. Once the files have been selected, the restore selection list is sent to the Backup Client which then initiates the restore process.

Activity

All current Backup Account connections and Storage Platform activities are displayed in this section and a progress bar provides the percentage completed for each process. Connections/Activities include Backups, Restores, Month-ends, Mirror Activity and Account Moves.

Storage Platform Configuration

NameServer, FileServer and MirrorServer settings are configured in this section.

SINGLE MAILBOX RECOVERY (SMR) PLUG-IN ENHANCEMENTS

The SMR plug-in has been enhanced with the following features:

- SMR no longer requires MAPI to retrieve the mailbox information; as it can query **LDAP** for the list.
- The **Check Configuration** option can be used to verify that Server Edition has sufficient permissions to access Exchange and select mailboxes can be **synchronised** with Active Directory to ensure that they exist.
- Improved **PST size management** by adding the option to specify a weekly schedule for PST file deletion.
- **Log file management** enables you to specify a retention period and maximum size for the Exmerge log files.
- The SMR Restore window now only displays the mailboxes that are available for restore.

DESKTOP AND LAPTOP EDITION SUPPORT FOR WINDOWS VISTA

The Desktop and Laptop Edition backup client is now supported on Windows Vista. Please note that the backup client requires administrative privileges to function.

PRODUCT OPTIMISATIONS AND BUG FIXES

Backup Client	
2233	Permissions restored incorrectly to C:\ root fixed.
2234	Transfer speed limit ignored during compression fixed.
2235	SE tries too fast to reconnect during compression, resulting Dos attack fixed.
2236	Backup Clients cannot not use Slave NS if NameServer MaxThreads is reached, fixed.
2271	NetWare SE trying to write to incorrect temporary location in \etc fixed.
2272	Could not select entire drive to restore, fixed.
2370	Trailing space in Backup Account name fixed.
2207	Linux client could not display/backup files > 2GB, fixed.
2359	Command line interface (CLI) problems fixed.
2422	Netware SE - Looking for script plug-in during account creation - fixed
NameServer	
2172	Problem when moving accounts between FileServers with the identical IP address on different ports fixed.
2155	NameServer database memory usage optimised.
2270	Slave NameServer restart problems fixed.
FileServer	
2227	Backup process optimised on FileServer by moving the recv folder, rather than file level move.
2268	SnapShot Import process optimised to use less disk space.
2416	Mirror problems with zlib errors - fixed
Backup Monitor	
2183	Backup Monitor activity modified to work for groups with underscores e.g. Test_Group. (Underscores are not allowed in the new Console, though)